

Chem-Impex International, Inc.

Tel: (630) 766-2112

E-mail: sales@chemimpex.com

Shipping and Correspondence:

935 Dillon Drive

Wood Dale, IL 60191

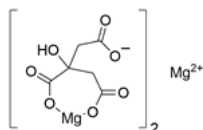
Fax: (630) 766-2218

Web site: www.chemimpex.com

Manufacturing site:

825 Dillon Drive

Wood Dale, IL 60191



Product Specifications

Catalogue Number	37044
Product	Magnesium citrate , Mg 16 %
CAS Number	3344-18-1
Molecular Formula	Mg ₃ (C ₆ H ₅ O ₇) ₂
Molecular Weight	451.13

Appearance	White to almost white powder
Anion	Chloride (Cl ⁻) : ≤ 0.05% Sulfate (SO ₄ ⁻) : ≤ 0.2%
Cation	Arsenic (As) : ≤ 3 ppm Iron (Fe) : ≤ 200 ppm Calcium (Ca) : ≤ 1%
Water Content (Karl Fisher)	≤ 29%
pH	5 - 9
Assay	Mg content : 14.5 - 16.4% (Dried basis)
Grade	USP
Storage	Store at 2 - 8 °C
Additional Information	Identification : Test for A : To Pass test Test for B : Test for chemical identification of citrate : To pass test

For Laboratory Use Only