

# Chem-Impex International, Inc.

---

**Tel:** (630) 766-2112

**E-mail:** sales@chemimpex.com

**Shipping and Correspondence:**

935 Dillon Drive

Wood Dale, IL 60191

**Fax:** (630) 766-2218

**Web site:** www.chemimpex.com

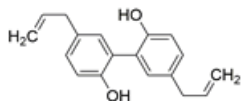
**Manufacturing site:**

825 Dillon Drive

Wood Dale, IL 60191

---

## Product Specifications



<b>Catalogue Number</b>	36990
<b>Product</b>	<b>Magnolol</b> 2,2'-Bichavicol 5,5'-Diallyl-2,2'-biphenyldiol
<b>CAS Number</b>	528-43-8
<b>Molecular Formula</b>	C <sub>18</sub> H <sub>18</sub> O <sub>2</sub>
<b>Molecular Weight</b>	266.33

---

<b>Appearance</b>	Off-white Powder
<b>Heavy Metals</b>	≤ 10 ppm
<b>Cation</b>	Arsenic (As) : ≤ 1 ppm Lead (Pb) : ≤ 5 ppm Mercury(Hg) : ≤ 0.1 ppm Cadmium (Cd) : ≤ 0.1 ppm
<b>Yeast and Mold</b>	≤ 100 cfu/g
<b>Loss on Drying</b>	≤ 5%
<b>Residual Solvents</b>	≤ 0.01%
<b>E. Coli</b>	Negative
<b>Microbial Count</b>	≤ 1000 cfu/g (TPC)
<b>Salmonella</b>	Negative
<b>Particle Size</b>	≥ 95% pass thr' 80 mesh
<b>Ash</b>	≤ 3%
<b>Purity by HPLC</b>	≥ 98%
<b>Storage</b>	Store at RT
<b>Additional Information</b>	Pesticides : Negative

# *Product Specifications*

Catalog Number: 36990

---

**For Laboratory Use Only**