

Chem-Impex International, Inc.

Tel: (630) 766-2112

E-mail: sales@chemimpex.com

Shipping and Correspondence:

935 Dillon Drive

Wood Dale, IL 60191

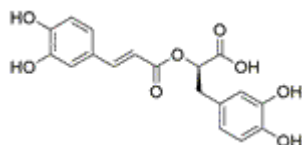
Fax: (630) 766-2218

Web site: www.chemimpex.com

Manufacturing site:

825 Dillon Drive

Wood Dale, IL 60191



Product Specifications

Catalogue Number	36943
Product	Rosmarinic acid <i>(R)</i> - <i>O</i> -(3,4-Dihydroxycinnamoyl)-3-(3,4-dihydroxyphenyl)lactic acid 3,4-Dihydroxycinnamic acid (<i>R</i>)-1-carboxy-2-(3,4-dihydroxyphenyl)ethyl ester
CAS Number	20283-92-5
Molecular Formula	C ₁₈ H ₁₆ O ₈
Molecular Weight	360.31

Appearance	White powder
Heavy Metals	≤ 10 ppm
Cation	Arsenic : ≤ 1 ppm Lead : ≤ 3 ppm Mercury : ≤ 0.1 ppm Cadmium : < 0.1 ppm
Yeast and Mold	≤ 100 cfu/g
Loss on Drying	≤ 3%
Residual Solvents	≤ 0.01%
E. Coli	Negative
Microbial Count	≤ 1000 cfu/g (TPC)
Salmonella	Negative
Mesh Size	≥ 95% thru 80 mesh
Ash	≤ 1%
Purity by HPLC	≥ 98%
Storage	Store at 2 - 8 °C
Additional Information	Pesticides : Negative

For Laboratory Use Only