

# Chem-Impex International, Inc.

Tel: (630) 766-2112

E-mail: sales@chemimpex.com

Shipping and Correspondence:

935 Dillon Drive

Wood Dale, IL 60191

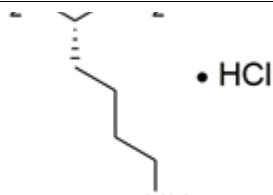
Fax: (630) 766-2218

Web site: www.chemimpex.com

Manufacturing site:

825 Dillon Drive

Wood Dale, IL 60191



## Product Specifications

Catalogue Number	36933
Product	<b>L-Lysine hydrochloride, non animal origin</b> (S)-2,6-Diaminohexanoic acid monohydrochloride L-Lys-OH•HCl
CAS Number	657-27-2
Molecular Formula	C <sub>6</sub> H <sub>14</sub> N <sub>2</sub> O <sub>2</sub> •HCl
Molecular Weight	182.65

Appearance	White crystalline powder
Solubility	Freely soluble in water and in formic acid, practically insoluble in ethanol (95%)
Elemental Analysis (Theory)	Nitrogen (N) : 26.60 ± 0.1%
Heavy Metals	≤ 10 ppm (as Pb)
Anion	Chloride (Cl) : 19.12 - 19.51% Sulfate (SO <sub>4</sub> ) : ≤ 0.020%
Cation	Ammonium (NH <sub>4</sub> ) : ≤ 0.02% Iron (Fe) : ≤ 10 ppm Arsenic (As <sub>2</sub> O <sub>3</sub> ) : ≤ 1 ppm
pH	5.0 - 6.0
Optical Rotation	[α] <sup>20</sup> <sub>D</sub> = 20.8 - 21.5 °
Infrared Spectrum	Conforms to structure
Loss on Drying	≤ 0.40%
Endotoxin Test	≤ 6.0 EU/g
Related Substances	Any unspecified impurity : ≤ 0.20% Total impurities : ≤ 1.0%
Sulfated Ash	≤ 0.10%
Assay	98.5 - 101.0%
Grade	USP, EP, JP
Storage	Store at RT
Additional Information	Taste : Slightly characteristic taste State of solution : ≥ 98%, Clear and colorless solution

# *Product Specifications*

Catalog Number: 36933

---

**For Laboratory Use Only**