

# Chem-Impex International, Inc.

---

**Tel:** (630) 766-2112

**E-mail:** sales@chemimpex.com

**Shipping and Correspondence:**

935 Dillon Drive

Wood Dale, IL 60191

**Fax:** (630) 766-2218

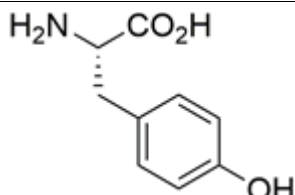
**Web site:** www.chemimpex.com

**Manufacturing site:**

825 Dillon Drive

Wood Dale, IL 60191

---



## Product Specifications

<b>Catalogue Number</b>	36930
<b>Product</b>	<b>L-Tyrosine, non animal origin</b> (S)-3-(4-Hydroxyphenyl)alanine L-Tyr-OH
<b>CAS Number</b>	60-18-4
<b>Molecular Formula</b>	C <sub>9</sub> H <sub>11</sub> NO <sub>3</sub>
<b>Molecular Weight</b>	181.19

---

<b>Appearance</b>	White crystalline powder
<b>Heavy Metals</b>	≤ 10 ppm (as Pb)
<b>Anion</b>	Chloride (Cl) : ≤ 0.020% Sulfate (SO <sub>4</sub> ) : ≤ 0.020%
<b>Cation</b>	Ammonium (NH <sub>4</sub> ) : ≤ 0.02% Iron (Fe) : ≤ 10 ppm Arsenic (As <sub>2</sub> O <sub>3</sub> ) : ≤ 1 ppm
<b>pH</b>	5.0 - 6.5
<b>Mould and Yeast</b>	Mold : ≤ 10 cfu/g
<b>Optical Rotation</b>	[α] <sup>20</sup> <sub>D</sub> = -11.3 to -12.1 ° [α] <sup>25</sup> <sub>D</sub> = -9.8 to -11.2 °
<b>Transmission</b>	State of solution : ≥ 98%, Clear and colorless solution
<b>Loss on Drying</b>	≤ 0.20%
<b>E. Coli</b>	Negative
<b>Endotoxin Test</b>	≤ 40 EU/g
<b>Microbial Count</b>	≤ 100 cfu/g
<b>Related Substances</b>	To pass test
<b>Residue On Ignition</b>	≤ 0.10%
<b>Assay</b>	99 - 101%
<b>Grade</b>	USP, EP, JP
<b>Storage</b>	Store at RT
<b>Additional Information</b>	Identification : To pass test

# *Product Specifications*

Catalog Number: 36930

---

**For Laboratory Use Only**