

# *Chem-Impex International, Inc.*

---

**Tel:** (630) 766-2112

**E-mail:** sales@chemimpex.com

**Shipping and Correspondence:**

935 Dillon Drive

Wood Dale, IL 60191

**Fax:** (630) 766-2218

**Web site:** www.chemimpex.com

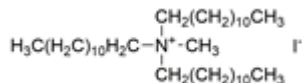
**Manufacturing site:**

825 Dillon Drive

Wood Dale, IL 60191

---

## *Product Specifications*



<b>Catalogue Number</b>	36806
<b>Product</b>	<b>Tridodecylmethylammonium iodide</b> Methyltridodecylammonium iodide
<b>CAS Number</b>	29710-98-3
<b>Molecular Formula</b>	C <sub>37</sub> H <sub>78</sub> IN
<b>Molecular Weight</b>	663.93

---

<b>Appearance</b>	White to off-white or pale yellow powder
<b>Melting Point</b>	106 - 107 °C
<b>Infrared Spectrum</b>	Conforms to structure
<b>Assay by titration</b>	≥ 97%
<b>Storage</b>	Store at RT

**For Laboratory Use Only**