

# *Chem-Impex International, Inc.*

---

**Tel:** (630) 766-2112

**E-mail:** sales@chemimpex.com

**Shipping and Correspondence:**

935 Dillon Drive

Wood Dale, IL 60191

**Fax:** (630) 766-2218

**Web site:** www.chemimpex.com

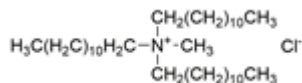
**Manufacturing site:**

825 Dillon Drive

Wood Dale, IL 60191

---

## *Product Specifications*



<b>Catalogue Number</b>	36805
<b>Product</b>	<b>Tridodecylmethylammonium chloride</b> Methyltridodecylammonium chloride
<b>CAS Number</b>	7173-54-8
<b>Molecular Formula</b>	C <sub>37</sub> H <sub>78</sub> ClN
<b>Molecular Weight</b>	572.47

---

<b>Appearance</b>	White powder
<b>Melting Point</b>	110 - 112 °C
<b>Infrared Spectrum</b>	Conforms to structure
<b>Assay by titration</b>	≥ 98%
<b>Purity by TLC</b>	≥ 98%
<b>Storage</b>	Store at RT

**For Laboratory Use Only**