

Chem-Impex International, Inc.

Tel: (630) 766-2112

E-mail: sales@chemimpex.com

Shipping and Correspondence:

935 Dillon Drive

Wood Dale, IL 60191

Fax: (630) 766-2218

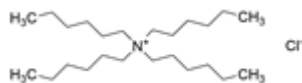
Web site: www.chemimpex.com

Manufacturing site:

825 Dillon Drive

Wood Dale, IL 60191

Product Specifications



Catalogue Number	36756
Product	Tetrahexylammonium chloride
CAS Number	5922-92-9
Molecular Formula	C ₂₄ H ₅₂ ClN
Molecular Weight	390.13

Appearance	White to off-white or pale yellow crystals
Melting Point	111 - 113 °C
¹H NMR	Conforms to structure
Assay by titration	≥ 96%
Storage	Store at RT

For Laboratory Use Only