

Chem-Impex International, Inc.

Tel: (630) 766-2112

E-mail: sales@chemimpex.com

Shipping and Correspondence:

935 Dillon Drive

Wood Dale, IL 60191

Fax: (630) 766-2218

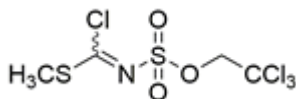
Web site: www.chemimpex.com

Manufacturing site:

825 Dillon Drive

Wood Dale, IL 60191

Product Specifications



| | |
|--------------------------|---|
| Catalogue Number | 36647 |
| Product | S-Methyl N-(2,2,2-trichloroethoxysulfonyl) <i>N</i> -(2,2,2-Trichloroethoxysulfonyl)carbonchlorothioic acid <i>S</i> methyl |
| CAS Number | 882739-48-2 |
| Molecular Formula | C ₄ H ₅ Cl ₄ NO ₃ S ₂ |
| Molecular Weight | 321.03 |

| | |
|---------------------------|------------------------------|
| Appearance | Beige to light brown powder |
| Melting Point | 75 - 79 °C |
| Assay by titration | ≥ 97% |
| Storage | Store at RT, under inert gas |

For Laboratory Use Only