

Chem-Impex International, Inc.

Tel: (630) 766-2112

E-mail: sales@chemimpex.com

Shipping and Correspondence:

935 Dillon Drive

Wood Dale, IL 60191

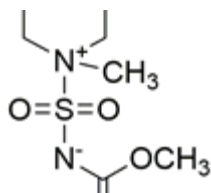
Fax: (630) 766-2218

Web site: www.chemimpex.com

Manufacturing site:

825 Dillon Drive

Wood Dale, IL 60191



Product Specifications

Catalogue Number	36589
Product	<i>N</i>-Methyl-<i>N</i>-{[(methoxycarbonyl)amino]}
CAS Number	1225185-00-1
Molecular Formula	C ₈ H ₁₆ N ₂ O ₄ S
Molecular Weight	236.29

Appearance	White to beige powder
Melting Point	95 - 100 °C
Infrared Spectrum	Conforms to structure
Purity by HPLC	≥ 95%
Storage	Store at RT

For Laboratory Use Only