

Chem-Impex International, Inc.

Tel: (630) 766-2112

E-mail: sales@chemimpex.com

Shipping and Correspondence:

935 Dillon Drive

Wood Dale, IL 60191

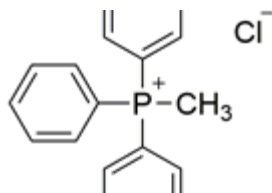
Fax: (630) 766-2218

Web site: www.chemimpex.com

Manufacturing site:

825 Dillon Drive

Wood Dale, IL 60191



Product Specifications

Catalogue Number	36556
Product	Methyltriphenylphosphonium chloride
CAS Number	1031-15-8
Molecular Formula	C ₁₉ H ₁₈ ClP
Molecular Weight	312.77

Warnings	<i>Hygroscopic!</i>
Appearance	White to off-white to pale yellow powder
Solubility	Soluble in methanol.
Melting Point	221 °C (dec.)
Infrared Spectrum	Conforms to structure
Assay by titration	≥ 97%
Purity by HPLC	≥ 97%
Storage	Store at RT

For Laboratory Use Only