

# Chem-Impex International, Inc.

---

**Tel:** (630) 766-2112

**E-mail:** sales@chemimpex.com

**Shipping and Correspondence:**

935 Dillon Drive

Wood Dale, IL 60191

**Fax:** (630) 766-2218

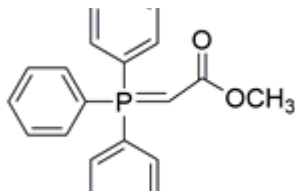
**Web site:** www.chemimpex.com

**Manufacturing site:**

825 Dillon Drive

Wood Dale, IL 60191

---



## Product Specifications

<b>Catalogue Number</b>	36543
<b>Product</b>	<b>Methyl (triphenylphosphoranylidene)acetate</b> (Carbomethoxymethylene)triphenylphosphorane (Methoxycarbonylmethylene)triphenylphosphorane
<b>CAS Number</b>	2605-67-6
<b>Molecular Formula</b>	C <sub>21</sub> H <sub>19</sub> O <sub>2</sub> P
<b>Molecular Weight</b>	334.35

---

<b>Appearance</b>	White powder
<b>Loss on Drying</b>	≤ 1%
<b>Related Substances</b>	Sum of Ph <sub>3</sub> P + Ph <sub>3</sub> PO : ≤ 2% Unspecified impurities : ≤ 0.5%
<b>Purity by HPLC</b>	≥ 98%
<b>Storage</b>	Store at RT

**For Laboratory Use Only**