

# Chem-Impex International, Inc.

---

**Tel:** (630) 766-2112

**E-mail:** sales@chemimpex.com

**Shipping and Correspondence:**

935 Dillon Drive

Wood Dale, IL 60191

**Fax:** (630) 766-2218

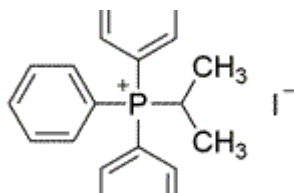
**Web site:** www.chemimpex.com

**Manufacturing site:**

825 Dillon Drive

Wood Dale, IL 60191

---



## Product Specifications

<b>Catalogue Number</b>	36505
<b>Product</b>	<b>Isopropyltriphenylphosphonium iodide</b> (1-Methylethyl)triphenylphosphonium iodide NSC 140615
<b>CAS Number</b>	24470-78-8
<b>Molecular Formula</b>	C <sub>21</sub> H <sub>22</sub> IP
<b>Molecular Weight</b>	432.28

---

<b>Warnings</b>	<i>Hygroscopic!</i>
<b>Appearance</b>	White to pale yellow powder
<b>Solubility</b>	Solubility in methanol, very faint turbidity.
<b>Melting Point</b>	194 - 197 °C
<b>Assay by titration</b>	97.5 - 102.5%
<b>Storage</b>	Store at RT

**For Laboratory Use Only**