

# Chem-Impex International, Inc.

---

**Tel:** (630) 766-2112

**E-mail:** sales@chemimpex.com

**Shipping and Correspondence:**

935 Dillon Drive

Wood Dale, IL 60191

**Fax:** (630) 766-2218

**Web site:** www.chemimpex.com

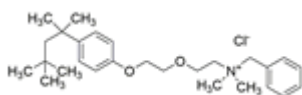
**Manufacturing site:**

825 Dillon Drive

Wood Dale, IL 60191

---

## Product Specifications



<b>Catalogue Number</b>	36489
<b>Product</b>	<b>Benzethonium chloride</b> (Diisobutylphenoxyethoxyethyl)dimethylbenzylammonium chloride Phemerol chloride
<b>CAS Number</b>	121-54-0
<b>Molecular Formula</b>	C <sub>27</sub> H <sub>42</sub> ClNO <sub>2</sub>
<b>Molecular Weight</b>	448.08

---

<b>Appearance</b>	White crystalline powder
<b>Solubility</b>	Soluble in water, chloroform, and in alcohol. Slightly soluble in diethylether.
<b>Odor</b>	Mild odor
<b>Infrared Spectrum</b>	Conforms to standard
<b>Loss on Drying</b>	≤ 5.0% (105 °C, 4h)
<b>Residual Solvents</b>	Ethyl acetate: < 5000 ppm Toluene: < 890 ppm
<b>Residue On Ignition</b>	≤ 0.1%
<b>Assay</b>	97.0-103.0% (HPLC)
<b>Purity by HPLC</b>	97 - 103%
<b>Storage</b>	Store at RT
<b>Additional Information</b>	Test for Chloride : To pass test

**For Laboratory Use Only**