

Chem-Impex International, Inc.

Tel: (630) 766-2112

E-mail: sales@chemimpex.com

Shipping and Correspondence:

935 Dillon Drive

Wood Dale, IL 60191

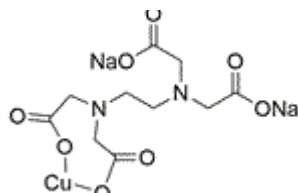
Fax: (630) 766-2218

Web site: www.chemimpex.com

Manufacturing site:

825 Dillon Drive

Wood Dale, IL 60191



Product Specifications

Catalogue Number	36459
Product	Ethylenediaminetetraacetic acid copper(II) (Ethylenedinitrilo)tetraacetic acid copper(II) disodium salt Copper disodium ethylenediaminetetraacetate
CAS Number	39208-15-6
Molecular Formula	C ₁₀ H ₁₂ CuN ₂ Na ₂ O ₈
Molecular Weight	397.74

Appearance	Blue powder
Solubility	Soluble in water.
Assay by titration	97 - 102%
Storage	Store at RT

For Laboratory Use Only