

Chem-Impex International, Inc.

Tel: (630) 766-2112

E-mail: sales@chemimpex.com

Shipping and Correspondence:

935 Dillon Drive

Wood Dale, IL 60191

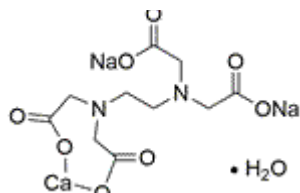
Fax: (630) 766-2218

Web site: www.chemimpex.com

Manufacturing site:

825 Dillon Drive

Wood Dale, IL 60191



Product Specifications

Catalogue Number	36458
Product	Ethylenediaminetetraacetic acid calcium Calcium disodium ethylenediaminetetraacetate hydrate
CAS Number	23411-34-9
Molecular Formula	C ₁₀ H ₁₂ O ₈ N ₂ Na ₂ Ca•xH ₂ O
Molecular Weight	374.27

Appearance	Almost white solid
Solubility	Soluble in water.
Infrared Spectrum	Conforms to structure
Assay by titration	97 - 102%
Storage	Store at RT

For Laboratory Use Only