

Chem-Impex International, Inc.

Tel: (630) 766-2112

E-mail: sales@chemimpex.com

Shipping and Correspondence:

935 Dillon Drive

Wood Dale, IL 60191

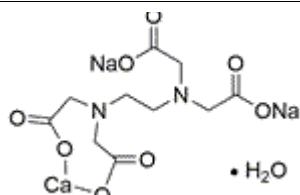
Fax: (630) 766-2218

Web site: www.chemimpex.com

Manufacturing site:

825 Dillon Drive

Wood Dale, IL 60191



Product Specifications

Catalogue Number	36457
Product	Ethylenediaminetetraacetic acid calcium
CAS Number	304695-78-1
Molecular Formula	C ₁₀ H ₁₂ O ₈ N ₂ Na ₂ Ca•xH ₂ O
Molecular Weight	374.27

Appearance	White to off-white or pale yellow powder
Melting Point	315 - 320 °C
Infrared Spectrum	Conforms to structure
Assay by titration	97.5 - 102.5%
Storage	Store at RT

For Laboratory Use Only