

Chem-Impex International, Inc.

Tel: (630) 766-2112

E-mail: sales@chemimpex.com

Shipping and Correspondence:

935 Dillon Drive

Wood Dale, IL 60191

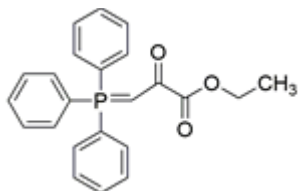
Fax: (630) 766-2218

Web site: www.chemimpex.com

Manufacturing site:

825 Dillon Drive

Wood Dale, IL 60191



Product Specifications

Catalogue Number	36448
Product	Ethyl (triphenylphosphoranylidene)pyruvate 2-Ethoxycarbonyl-2-oxoethylidene triphenylphosphorane [(Carboxycarbonyl)methylene]triphenylphosphorane ethyl ester
CAS Number	13321-61-4
Molecular Formula	C ₂₃ H ₂₁ O ₃ P
Molecular Weight	376.38

Appearance	White to off-white or pale yellow powder
Melting Point	175 °C (dec.)
Infrared Spectrum	Conforms to structure
Assay	≥ 95%
Storage	Store at RT

For Laboratory Use Only