

Chem-Impex International, Inc.

Tel: (630) 766-2112

E-mail: sales@chemimpex.com

Shipping and Correspondence:

935 Dillon Drive

Wood Dale, IL 60191

Fax: (630) 766-2218

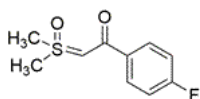
Web site: www.chemimpex.com

Manufacturing site:

825 Dillon Drive

Wood Dale, IL 60191

Product Specifications



Catalogue Number	36445
Product	Dimethylsulfoxonium-4-(fluoro) 2-(Dimethyl(oxo)-sulfaneylidene)-1-(4-fluorophenyl)ethan-1-one
CAS Number	2118974-82-4
Molecular Formula	C ₁₀ H ₁₁ FO ₂ S
Molecular Weight	214.26

Appearance	Powder or crystalline powder
Melting Point	112 - 116 °C
Assay	≥ 95%
Storage	Store at ≤ -20 °C

For Laboratory Use Only