

Chem-Impex International, Inc.

Tel: (630) 766-2112

E-mail: sales@chemimpex.com

Shipping and Correspondence:

935 Dillon Drive

Wood Dale, IL 60191

Fax: (630) 766-2218

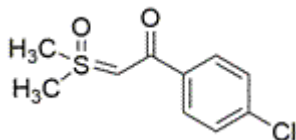
Web site: www.chemimpex.com

Manufacturing site:

825 Dillon Drive

Wood Dale, IL 60191

Product Specifications



Catalogue Number	36444
Product	Dimethylsulfoxonium-4-(chloro) 1-(4-Chlorophenyl)-2-(dimethyl(oxo)-sulfaneylidene)ethan-1-one
CAS Number	676486-15-0
Molecular Formula	C ₁₀ H ₁₁ ClO ₂ S
Molecular Weight	230.71

Appearance	White to off-white or light yellow powder
Melting Point	154 °C
¹H NMR	Conforms to structure
Assay by titration	95 - 105%
Storage	Store at ≤ -20 °C

For Laboratory Use Only