

Chem-Impex International, Inc.

Tel: (630) 766-2112

E-mail: sales@chemimpex.com

Shipping and Correspondence:

935 Dillon Drive

Wood Dale, IL 60191

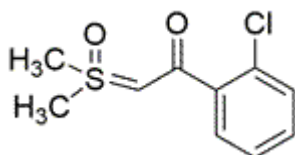
Fax: (630) 766-2218

Web site: www.chemimpex.com

Manufacturing site:

825 Dillon Drive

Wood Dale, IL 60191



Product Specifications

Catalogue Number	36439
Product	Dimethylsulfoxonium-2-(chloro) 1-(2-Chlorophenyl)-2-(dimethyl(oxo)-sulfaneylidene)ethan-1-one
CAS Number	2118974-86-8
Molecular Formula	C ₁₀ H ₁₁ ClO ₂ S
Molecular Weight	230.71

Appearance	Off-white to beige powder
Melting Point	136 - 137 °C
Infrared Spectrum	Conforms to structure
Purity	≥ 95%
Storage	Store at ≤ -20 °C

For Laboratory Use Only