

Chem-Impex International, Inc.

Tel: (630) 766-2112

E-mail: sales@chemimpex.com

Shipping and Correspondence:

935 Dillon Drive

Wood Dale, IL 60191

Fax: (630) 766-2218

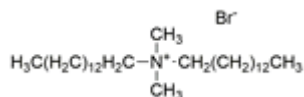
Web site: www.chemimpex.com

Manufacturing site:

825 Dillon Drive

Wood Dale, IL 60191

Product Specifications



Catalogue Number	36435
Product	Dimethylditetradecylammonium bromide Ditetradecyldimethylammonium bromide
CAS Number	68105-02-2
Molecular Formula	C ₃₀ H ₆₄ BrN
Molecular Weight	518.74

Warnings	<i>Hygroscopic!</i>
Appearance	White powder
Solubility	Soluble in ethanol and methanol.
Melting Point	167 - 169 °C
¹H NMR	Conforms to structure
Assay by titration	≥ 97%
Storage	Store at RT

For Laboratory Use Only