

Chem-Impex International, Inc.

Tel: (630) 766-2112

E-mail: sales@chemimpex.com

Shipping and Correspondence:

935 Dillon Drive

Wood Dale, IL 60191

Fax: (630) 766-2218

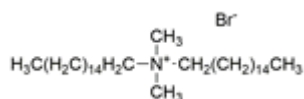
Web site: www.chemimpex.com

Manufacturing site:

825 Dillon Drive

Wood Dale, IL 60191

Product Specifications



Catalogue Number	36422
Product	Dihexadecyldimethylammonium bromide Dimethyldihexadecylammonium bromide
CAS Number	70755-47-4
Molecular Formula	C ₃₄ H ₇₂ BrN
Molecular Weight	574.85

Appearance	White to off-white powder
Solubility	Almost soluble in hot methanol.
Melting Point	159 - 162 °C
¹H NMR	Conforms to structure
Assay by titration	≥ 97%
Storage	Store at RT

For Laboratory Use Only