

Chem-Impex International, Inc.

Tel: (630) 766-2112

E-mail: sales@chemimpex.com

Shipping and Correspondence:

935 Dillon Drive

Wood Dale, IL 60191

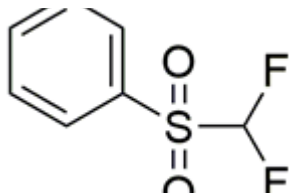
Fax: (630) 766-2218

Web site: www.chemimpex.com

Manufacturing site:

825 Dillon Drive

Wood Dale, IL 60191



Product Specifications

Catalogue Number	36420
Product	Difluoromethyl phenyl sulfone [(Difluoromethyl)sulfonyl]benzene
CAS Number	1535-65-5
Molecular Formula	C ₇ H ₆ F ₂ O ₂ S
Molecular Weight	192.18

Appearance	Colorless to pale yellow liquid
Solubility	Soluble in chloroform and water.
Melting Point	24 - 25 °C
Flash Point	128 °C
Density	1.324
Refractive Index	1.500
Purity by HPLC	≥ 97%
Storage	Store at RT, under inert gas

For Laboratory Use Only