

Chem-Impex International, Inc.

Tel: (630) 766-2112

E-mail: sales@chemimpex.com

Shipping and Correspondence:

935 Dillon Drive

Wood Dale, IL 60191

Fax: (630) 766-2218

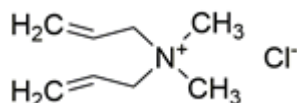
Web site: www.chemimpex.com

Manufacturing site:

825 Dillon Drive

Wood Dale, IL 60191

Product Specifications



Catalogue Number	36365
Product	Diallyldimethylammonium chloride
CAS Number	7398-69-8
Molecular Formula	C ₈ H ₁₆ ClN
Molecular Weight	161.67

Appearance	White to pale yellow powder
Melting Point	140 - 148 °C
¹H NMR	Conforms to structure
Assay by titration	≥ 97%
Storage	Store at RT

For Laboratory Use Only