

# Chem-Impex International, Inc.

---

**Tel:** (630) 766-2112

**E-mail:** sales@chemimpex.com

**Shipping and Correspondence:**

935 Dillon Drive

Wood Dale, IL 60191

**Fax:** (630) 766-2218

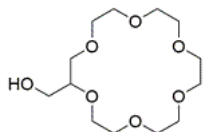
**Web site:** www.chemimpex.com

**Manufacturing site:**

825 Dillon Drive

Wood Dale, IL 60191

---



## Product Specifications

<b>Catalogue Number</b>	36350
<b>Product</b>	<b>2-Hydroxymethyl-18-crown-6</b> 1,4,7,10,13,16-Hexaoxacyclooctadecane-2-methanol 18-Crown-6-methanol
<b>CAS Number</b>	70069-04-4
<b>Molecular Formula</b>	C <sub>13</sub> H <sub>26</sub> O <sub>7</sub>
<b>Molecular Weight</b>	294.34

---

<b>Appearance</b>	Colorless to pale yellow liquid
<b>Solubility</b>	Soluble in water.
<b>Boiling point</b>	150 °C
<b>Flash Point</b>	113 °C
<b>Density</b>	1.174
<b>Refractive Index</b>	1.479
<b>Purity by GC</b>	≥ 95%
<b>Storage</b>	Store at RT

**For Laboratory Use Only**