

Chem-Impex International, Inc.

Tel: (630) 766-2112

E-mail: sales@chemimpex.com

Shipping and Correspondence:

935 Dillon Drive

Wood Dale, IL 60191

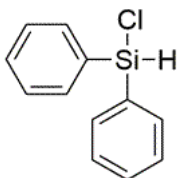
Fax: (630) 766-2218

Web site: www.chemimpex.com

Manufacturing site:

825 Dillon Drive

Wood Dale, IL 60191



Product Specifications

Catalogue Number	36343
Product	Chlorodiphenylsilane Diphenylchlorosilane
CAS Number	1631-83-0
Molecular Formula	C ₁₂ H ₁₁ ClSi
Molecular Weight	218.75
<hr/>	
Appearance	Colorless to pale yellow liquid
Boiling point	143 °C/10 mmHg
Flash Point	105 °C
Density	1.118
Refractive Index	1.578
Purity by GC	≥ 90%
Storage	Store at RT

For Laboratory Use Only