

# Chem-Impex International, Inc.

---

**Tel:** (630) 766-2112

**E-mail:** sales@chemimpex.com

**Shipping and Correspondence:**

935 Dillon Drive

Wood Dale, IL 60191

**Fax:** (630) 766-2218

**Web site:** www.chemimpex.com

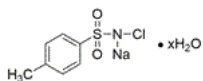
**Manufacturing site:**

825 Dillon Drive

Wood Dale, IL 60191

---

## Product Specifications



<b>Catalogue Number</b>	36323
<b>Product</b>	<b>Chloramine-T hydrate</b> <i>N</i> -Chloro- <i>p</i> -toluenesulfonamide sodium salt hydrate
<b>CAS Number</b>	149358-73-6
<b>Molecular Formula</b>	C <sub>7</sub> H <sub>7</sub> NO <sub>2</sub> SNaCl•xH <sub>2</sub> O
<b>Molecular Weight</b>	227.64

---

<b>Appearance</b>	White to pale yellow powder
<b>Melting Point</b>	167 - 170 °C (dec.)
<b>Infrared Spectrum</b>	Conforms to structure
<b>Assay</b>	≥ 95%
<b>Storage</b>	Store at RT

**For Laboratory Use Only**