

Chem-Impex International, Inc.

Tel: (630) 766-2112

E-mail: sales@chemimpex.com

Shipping and Correspondence:

935 Dillon Drive

Wood Dale, IL 60191

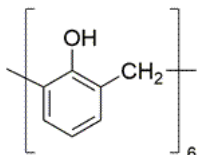
Fax: (630) 766-2218

Web site: www.chemimpex.com

Manufacturing site:

825 Dillon Drive

Wood Dale, IL 60191



Product Specifications

Catalogue Number	36314
Product	Calix[6]arene
CAS Number	96107-95-8
Molecular Formula	C ₄₂ H ₃₆ O ₆
Molecular Weight	636.73

Appearance	White to off-white or pale yellow powder
Solubility	Miscible with alcohol, chloroform, ether, carbon disulfide, acetone, oils, carbon tetrachloride and glacial acetic acid.
Melting Point	> 300 °C
¹H NMR	Conforms to structure
Purity by HPLC	≥ 97%
Storage	Store at RT

For Laboratory Use Only