

# Chem-Impex International, Inc.

---

Tel: (630) 766-2112

E-mail: sales@chemimpex.com

Shipping and Correspondence:

935 Dillon Drive

Wood Dale, IL 60191

Fax: (630) 766-2218

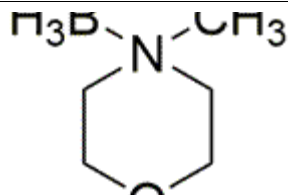
Web site: www.chemimpex.com

Manufacturing site:

825 Dillon Drive

Wood Dale, IL 60191

---



## Product Specifications

Catalogue Number	36276
Product	<b>Borane 4-methylmorpholine complex</b> 4-Methylmorpholine-borane
CAS Number	15648-16-5
Molecular Formula	C <sub>5</sub> H <sub>14</sub> BNO
Molecular Weight	114.98

---

Appearance	White to off-white crystal
Water Content (Karl Fisher)	≤ 0.5%
<sup>1</sup> H NMR	Conforms to structure
Assay by titration	≥ 97% (Borax solution)
Storage	Store at RT

**For Laboratory Use Only**