

Chem-Impex International, Inc.

Tel: (630) 766-2112

E-mail: sales@chemimpex.com

Shipping and Correspondence:

935 Dillon Drive

Wood Dale, IL 60191

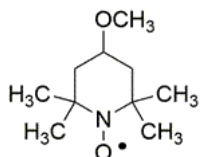
Fax: (630) 766-2218

Web site: www.chemimpex.com

Manufacturing site:

825 Dillon Drive

Wood Dale, IL 60191



Product Specifications

Catalogue Number	36202
Product	4-Methoxy-TEMPO 4-Methoxy-2,2,6,6-tetramethyl-1-piperidinyloxy
CAS Number	95407-69-5
Molecular Formula	C ₁₀ H ₂₀ NO ₂
Molecular Weight	186.27

Appearance	Orange solid
Melting Point	40 - 44 °C
Infrared Spectrum	Conforms to structure
Purity by HPLC	≥ 97%
Storage	Store at 2 - 8 °C

For Laboratory Use Only