

# Chem-Impex International, Inc.

---

**Tel:** (630) 766-2112

**E-mail:** sales@chemimpex.com

**Shipping and Correspondence:**

935 Dillon Drive

Wood Dale, IL 60191

**Fax:** (630) 766-2218

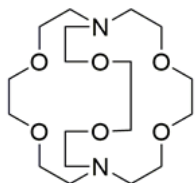
**Web site:** www.chemimpex.com

**Manufacturing site:**

825 Dillon Drive

Wood Dale, IL 60191

---



## Product Specifications

<b>Catalogue Number</b>	36187
<b>Product</b>	<b>4,7,13,16,21,24-Hexaoxa-1,10-</b> Cryptand 222
<b>CAS Number</b>	23978-09-8
<b>Molecular Formula</b>	C <sub>18</sub> H <sub>36</sub> N <sub>2</sub> O <sub>6</sub>
<b>Molecular Weight</b>	376.49

---

<b>Warnings</b>	<i>Hygroscopic!</i>
<b>Appearance</b>	White to off-white powder
<b>Melting Point</b>	68 - 71 °C
<b>Infrared Spectrum</b>	Conforms to structure
<b>Assay by titration</b>	≥ 98%
<b>Storage</b>	Store at RT, under inert gas

**For Laboratory Use Only**