

Chem-Impex International, Inc.

Tel: (630) 766-2112

E-mail: sales@chemimpex.com

Shipping and Correspondence:

935 Dillon Drive

Wood Dale, IL 60191

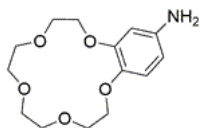
Fax: (630) 766-2218

Web site: www.chemimpex.com

Manufacturing site:

825 Dillon Drive

Wood Dale, IL 60191



Product Specifications

Catalogue Number	36180
Product	4'-Aminobenzo-15-crown-5 (Benzo-15-crown-5)-4'-ylamine
CAS Number	60835-71-4
Molecular Formula	C ₁₄ H ₂₁ N ₅ O
Molecular Weight	283.32

Warnings	<i>Light sensitive!</i>
Appearance	White to brown powder
Melting Point	76 - 78 °C
Infrared Spectrum	Conforms to structure
Assay by titration	96 - 103%
Storage	Store at RT, under inert gas

For Laboratory Use Only