

Chem-Impex International, Inc.

Tel: (630) 766-2112

E-mail: sales@chemimpex.com

Shipping and Correspondence:

935 Dillon Drive

Wood Dale, IL 60191

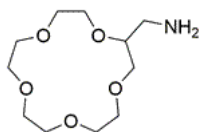
Fax: (630) 766-2218

Web site: www.chemimpex.com

Manufacturing site:

825 Dillon Drive

Wood Dale, IL 60191



Product Specifications

Catalogue Number	36151
Product	2-Aminomethyl-15-crown-5 1,4,7,10,13-Pentaoxacyclopentadecane-2-methanamine
CAS Number	83585-56-2
Molecular Formula	C ₁₁ H ₂₃ N ₅ O
Molecular Weight	249.3

Appearance	Colorless to light brown liquid
Boiling point	115 °C
Flash Point	113 °C
Density	1.134
Refractive Index	1.48
Infrared Spectrum	Conforms to structure
¹H NMR	Conforms to structure
Assay by titration	94 - 104%
Storage	Store at RT

For Laboratory Use Only