

# Chem-Impex International, Inc.

---

**Tel:** (630) 766-2112

**E-mail:** sales@chemimpex.com

**Shipping and Correspondence:**

935 Dillon Drive

Wood Dale, IL 60191

**Fax:** (630) 766-2218

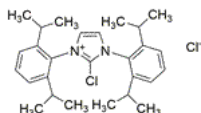
**Web site:** www.chemimpex.com

**Manufacturing site:**

825 Dillon Drive

Wood Dale, IL 60191

---



## Product Specifications

<b>Catalogue Number</b>	36142
<b>Product</b>	<b>2-Chloro-1,3-bis(2,6-diisopropylphenyl)</b> 1,3-Bis(2,6-di-i-propylphenyl)-2-chloroimidazolium chloride Chloroimidazolium chloride
<b>CAS Number</b>	1228185-09-8
<b>Molecular Formula</b>	C <sub>27</sub> H <sub>36</sub> Cl <sub>2</sub> N <sub>2</sub>
<b>Molecular Weight</b>	459.49

---

<b>Warnings</b>	<i>Air sensitive!</i>
<b>Appearance</b>	White to off-white or yellow powder
<b>Melting Point</b>	283 - 285 °C
<b>Infrared Spectrum</b>	Conforms to structure
<b>Assay by titration</b>	95 - 105%
<b>Storage</b>	Store at RT, under inert gas

**For Laboratory Use Only**