

# Chem-Impex International, Inc.

---

**Tel:** (630) 766-2112

**E-mail:** sales@chemimpex.com

**Shipping and Correspondence:**

935 Dillon Drive

Wood Dale, IL 60191

**Fax:** (630) 766-2218

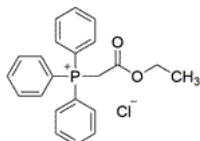
**Web site:** www.chemimpex.com

**Manufacturing site:**

825 Dillon Drive

Wood Dale, IL 60191

---



## Product Specifications

---

<b>Catalogue Number</b>	36010
<b>Product</b>	<b>(Ethoxycarbonylmethyl)</b> (2-Ethoxy-2-oxoethyl)triphenylphosphonium chloride
<b>CAS Number</b>	17577-28-5
<b>Molecular Formula</b>	C <sub>22</sub> H <sub>22</sub> ClO <sub>2</sub> P
<b>Molecular Weight</b>	384.84

---

<b>Warnings</b>	<i>Hygroscopic!</i>
<b>Appearance</b>	White powder
<b>Melting Point</b>	120 - 123 °C (dec.)
<b>Assay by titration</b>	≥ 90%
<b>Grade</b>	Technical grade
<b>Application</b>	It is a reactant for ring-opening reactions with Wittig reagents
<b>Storage</b>	Store at 2 - 8 °C, under inert gas

**For Laboratory Use Only**