

Chem-Impex International, Inc.

Tel: (630) 766-2112

E-mail: sales@chemimpex.com

Shipping and Correspondence:

935 Dillon Drive

Wood Dale, IL 60191

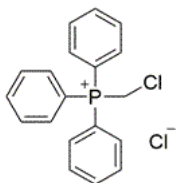
Fax: (630) 766-2218

Web site: www.chemimpex.com

Manufacturing site:

825 Dillon Drive

Wood Dale, IL 60191



Product Specifications

Catalogue Number	36004
Product	(Chloromethyl)triphenylphosphonium chloride
CAS Number	5293-84-5
Molecular Formula	C ₁₉ H ₁₇ Cl ₂ P
Molecular Weight	347.22

Warnings	<i>Hygroscopic!</i>
Appearance	White to pale yellow powder
Solubility	Almost transparent in water
Melting Point	262 - 264 °C
Infrared Spectrum	Conforms to structure
Assay by titration	96.5 - 103.5%
Storage	Store at RT, under inert gas

For Laboratory Use Only