

# Chem-Impex International, Inc.

---

**Tel:** (630) 766-2112

**E-mail:** sales@chemimpex.com

**Shipping and Correspondence:**

935 Dillon Drive

Wood Dale, IL 60191

**Fax:** (630) 766-2218

**Web site:** www.chemimpex.com

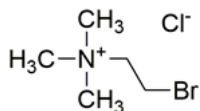
**Manufacturing site:**

825 Dillon Drive

Wood Dale, IL 60191

---

## Product Specifications



<b>Catalogue Number</b>	35975
<b>Product</b>	<b>(2-Chloroethyl)trimethylammonium chloride</b> Chlormequat chloride Chlorocholine chloride
<b>CAS Number</b>	999-81-5
<b>Molecular Formula</b>	C <sub>5</sub> H <sub>13</sub> NCl <sub>2</sub>
<b>Molecular Weight</b>	158.07

---

<b>Warnings</b>	<i>Hygroscopic!</i>
<b>Appearance</b>	White powder
<b>Melting Point</b>	239 - 243 °C (dec.)
<b>Infrared Spectrum</b>	Conforms to structure
<b>Assay by titration</b>	≥ 98%
<b>Storage</b>	Store at RT, under inert gas

**For Laboratory Use Only**