

# Chem-Impex International, Inc.

---

**Tel:** (630) 766-2112

**E-mail:** sales@chemimpex.com

**Shipping and Correspondence:**

935 Dillon Drive

Wood Dale, IL 60191

**Fax:** (630) 766-2218

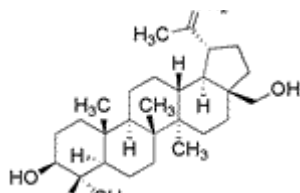
**Web site:** www.chemimpex.com

**Manufacturing site:**

825 Dillon Drive

Wood Dale, IL 60191

---



## Product Specifications

<b>Catalogue Number</b>	35235
<b>Product</b>	<b>Betulin</b> (3 $\beta$ )-Lup-20(29)-ene-3,28-diol Betulinic alcohol
<b>CAS Number</b>	473-98-3
<b>Molecular Formula</b>	C <sub>30</sub> H <sub>50</sub> O <sub>2</sub>
<b>Molecular Weight</b>	442.73

---

<b>Appearance</b>	White or off-white powder
<b>Bulk density</b>	0.10 - 0.20 g/mL
<b>Heavy Metals</b>	≤ 10 ppm
<b>Cation</b>	Lead : ≤ 3 ppm Arsenic : ≤ 1 ppm Mercury : ≤ 0.1 ppm
<b>Mould and Yeast</b>	≤ 100 cfu/g
<b>Loss on Drying</b>	≤ 2%
<b>Coliform Organisms</b>	Negative
<b>Microbial Count</b>	≤ 1000 cfu/g (TAC)
<b>Salmonella</b>	Negative
<b>Particle Size</b>	100% thr' 40 mesh
<b>Ash</b>	≤ 2%
<b>Purity by HPLC</b>	≥ 99%
<b>Storage</b>	Store at 2 - 8 °C

**For Laboratory Use Only**