

Chem-Impex International, Inc.

Tel: (630) 766-2112

E-mail: sales@chemimpex.com

Shipping and Correspondence:

935 Dillon Drive

Wood Dale, IL 60191

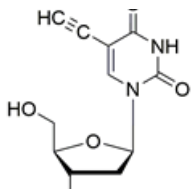
Fax: (630) 766-2218

Web site: www.chemimpex.com

Manufacturing site:

825 Dillon Drive

Wood Dale, IL 60191



Product Specifications

Catalogue Number	35131
Product	5-Ethynyl-2'-deoxyuridine (EdU)
	5-Ethynyl-2'-dU
CAS Number	61135-33-9
Molecular Formula	C ₁₁ H ₁₂ N ₂ O ₅
Molecular Weight	252.23
<hr/>	
Appearance	White solid
Solubility	Soluble in water, DMSO, DMF
TLC System	DCM : MeOH
LCMS	Conforms to structure
Purity by HPLC	≥ 99%
Purity by TLC	Single spot
Storage	Store at -10 °C, desiccate and shipped at ambient temperature

For Laboratory Use Only