

Chem-Impex International, Inc.

Tel: (630) 766-2112

E-mail: sales@chemimpex.com

Shipping and Correspondence:

935 Dillon Drive

Wood Dale, IL 60191

Fax: (630) 766-2218

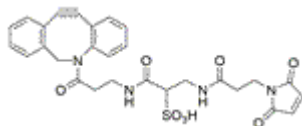
Web site: www.chemimpex.com

Manufacturing site:

825 Dillon Drive

Wood Dale, IL 60191

Product Specifications



Catalogue Number	35065
Product	Sulfo DBCO maleimide Sulfo dibenzocyclooctyne maleimide
CAS Number	2028281-86-7
Molecular Formula	C ₂₈ H ₂₆ N ₄ O ₈ S
Molecular Weight	578.59

Appearance	Yellow solid
TLC System	CHCl ₃ :MeOH: 5:1+1% Et ₃ N
LCMS	LC/MS (ESI) : Conforms to structure
Purity by HPLC	≥ 98%
Purity by TLC	Single spot
Storage	Store at -10 °C, desiccate and shipped at ambient temperature

For Laboratory Use Only