

Chem-Impex International, Inc.

Tel: (630) 766-2112

E-mail: sales@chemimpex.com

Shipping and Correspondence:

935 Dillon Drive

Wood Dale, IL 60191

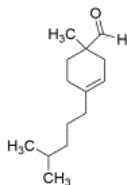
Fax: (630) 766-2218

Web site: www.chemimpex.com

Manufacturing site:

825 Dillon Drive

Wood Dale, IL 60191



Product Specifications

Catalogue Number	35028
Product	Vernaldehyde (Sum of isomers) 1-Methyl-4-(4-methylpentyl)-3-cyclohexene-1-carboxaldehyde 1-Methyl-4-(4-methylpentyl)cyclohex-3-ene-1-carbaldehyde
CAS Number	66327-54-6
Molecular Formula	C ₁₄ H ₂₄ O
Molecular Weight	208.34

Appearance	Colorless to pale yellow liquid
Odor	Floral, fresh, green, muguet with a citrus note
Flash Point	98 °C
Density	0.891 - 0.896 at 20 °C
Refractive Index	n ₂₀ /D 1.463 - 1.467
Purity by GC	≥ 85% Isomer 1 : 26.00 - 44.50% Isomer 2 : 41.00 - 61.00%
Grade	KOSHER
Storage	Store at RT
Additional Information	Stabilizer : ≤ 0.15% (Alpha-Tocopherol)

For Laboratory Use Only