

Chem-Impex International, Inc.

Tel: (630) 766-2112

E-mail: sales@chemimpex.com

Shipping and Correspondence:

935 Dillon Drive

Wood Dale, IL 60191

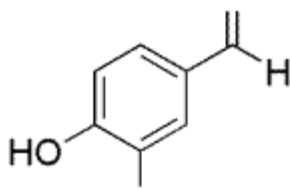
Fax: (630) 766-2218

Web site: www.chemimpex.com

Manufacturing site:

825 Dillon Drive

Wood Dale, IL 60191



Product Specifications

Catalogue Number	35015
Product	Vanillin (Rhovea®) 4-Hydroxy-3-methoxybenzaldehyde (Rhovea®)
CAS Number	121-33-5
Molecular Formula	C ₈ H ₈ O ₃
Molecular Weight	152.15

Appearance	Fine white to slightly yellow crystals, usually needles
Odor	Characteristic odor of vanilla
Melting Point	81 - 83 °C
Flash Point	> 200 °F
Heavy Metals	≤ 10 ppm
Loss on Drying	0.00 - 0.06%
Residue On Ignition	≤ 0.05% (Sulphated ash)
Purity by GC	99.9 - 100.0%
Grade	FEMA 3107
Storage	Store at RT

For Laboratory Use Only