

Chem-Impex International, Inc.

Tel: (630) 766-2112

E-mail: sales@chemimpex.com

Shipping and Correspondence:

935 Dillon Drive

Wood Dale, IL 60191

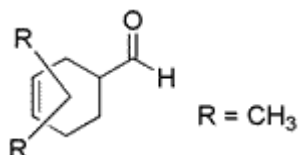
Fax: (630) 766-2218

Web site: www.chemimpex.com

Manufacturing site:

825 Dillon Drive

Wood Dale, IL 60191



Product Specifications

Catalogue Number	35001
Product	2,4-Dimethyl-3-cyclohexene-1-carboxaldehyde Ligustral Trivertal
CAS Number	68039-49-6
Molecular Formula	C ₉ H ₁₄ O
Molecular Weight	138.21

Appearance	Colorless to slightly yellow liquid
Odor	Green and floral odor
Flash Point	65 °C
Density	0.934 - 0.939 at 20 °C
Refractive Index	n _{20/D} 1.470 - 1.475
Acid value	0 - 1 mgKOH/G
Assay	Assay li : 73 - 80% Assay lii : 0 - 6% Assay : 98.5 - 100.0% (Sum of isomers)
Purity	18 - 27%
Grade	KOSHER
Storage	Store at RT

For Laboratory Use Only