

Chem-Impex International, Inc.

Tel: (630) 766-2112

E-mail: sales@chemimpex.com

Shipping and Correspondence:

935 Dillon Drive

Wood Dale, IL 60191

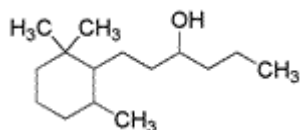
Fax: (630) 766-2218

Web site: www.chemimpex.com

Manufacturing site:

825 Dillon Drive

Wood Dale, IL 60191



Product Specifications

Catalogue Number	34991
Product	1-(2,2,6-Trimethylcyclohexyl)-3-hexanol Timberol
CAS Number	70788-30-6
Molecular Formula	C ₁₅ H ₃₀ O
Molecular Weight	226.40

Appearance	Clear, colorless liquid
Odor	Characteristic odor
Flash Point	> 93 °C
Density	0.895 - 0.901 at 25 °C
Refractive Index	n ₂₀ /D 1.4700 - 1.4760
Acid value	0 - 1 mgKOH/g
Purity by GC	88 - 96%
Storage	Store at RT
Additional Information	Cis isomer : 67 - 76% Trans : 17 - 23%

For Laboratory Use Only