

Chem-Impex International, Inc.

Tel: (630) 766-2112

E-mail: sales@chemimpex.com

Shipping and Correspondence:

935 Dillon Drive

Wood Dale, IL 60191

Fax: (630) 766-2218

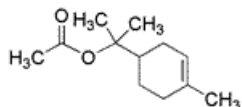
Web site: www.chemimpex.com

Manufacturing site:

825 Dillon Drive

Wood Dale, IL 60191

Product Specifications



Catalogue Number	34970
Product	Terpinyl acetate 2-(4-Methylcyclohex-3-en-1-yl)propan-2-yl acetate <i>p</i> -Meth-1-en-8-yl-acetate
CAS Number	8007-35-0 , 80-26-2
Molecular Formula	C ₁₂ H ₂₀ O ₂
Molecular Weight	196.28

Appearance	Clear liquid
Specific Gravity	0.955 - 0.965 at 20 °C
Refractive Index	<i>n</i> _{20D} 1.466 - 1.470
Acid value	0 - 1 mgKOH/g
Purity	97 - 100%
Grade	FG, KOSHER, FEMA 3047
Storage	Store at RT
Additional Information	Color : 0 - 50 (Hazen)

For Laboratory Use Only