

Chem-Impex International, Inc.

Tel: (630) 766-2112

E-mail: sales@chemimpex.com

Shipping and Correspondence:

935 Dillon Drive

Wood Dale, IL 60191

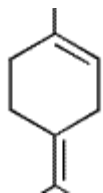
Fax: (630) 766-2218

Web site: www.chemimpex.com

Manufacturing site:

825 Dillon Drive

Wood Dale, IL 60191



Product Specifications

Catalogue Number	34969
Product	Terpinolene Natural 4-Isopropylidene-1-methylcyclohexene <i>p</i> -Meth-1-en-8-yl-formate
CAS Number	586-62-9
Molecular Formula	C ₁₀ H ₁₆
Molecular Weight	136.24

Appearance	Colorless to pale yellow liquid
Odor	Sweet-piney, oily, pleasant odor
Flash Point	62 °C
Specific Gravity	0.857 - 0.863 at 25 °C
Refractive Index	n ₂₀ /D 1.485 - 1.492
Purity by GC	94 - 100%
Grade	Natural, FG, KOSHER
Storage	Store at RT

For Laboratory Use Only