

Chem-Impex International, Inc.

Tel: (630) 766-2112

E-mail: sales@chemimpex.com

Shipping and Correspondence:

935 Dillon Drive

Wood Dale, IL 60191

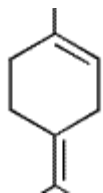
Fax: (630) 766-2218

Web site: www.chemimpex.com

Manufacturing site:

825 Dillon Drive

Wood Dale, IL 60191



Product Specifications

Catalogue Number	34967
Product	Terpinolene 20 (Essence De Pin PF) 4-Isopropylidene-1-methylcyclohexene <i>p</i> -Meth-1-en-8-yl-formate
Molecular Formula	C ₁₀ H ₁₆
Molecular Weight	136.24

Appearance	Clear colorless to slightly yellowish liquid
Odor	Turpentine like odor
Flash Point	53 °C
Specific Gravity	0.875 - 0.885 at 20 °C
Refractive Index	n ₂₀ /D 1.467 - 1.472
Grade	KOSHER
Storage	Store at RT

For Laboratory Use Only