

Chem-Impex International, Inc.

Tel: (630) 766-2112

E-mail: sales@chemimpex.com

Shipping and Correspondence:

935 Dillon Drive

Wood Dale, IL 60191

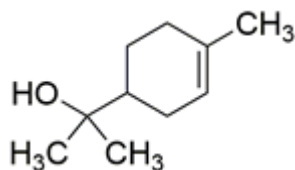
Fax: (630) 766-2218

Web site: www.chemimpex.com

Manufacturing site:

825 Dillon Drive

Wood Dale, IL 60191



Product Specifications

Catalogue Number	34966
Product	Terpineol, mixture of isomers
CAS Number	8000-41-7
Molecular Formula	C ₁₀ H ₁₈ O
Molecular Weight	154.25

Appearance	Colorless viscous liquid
Solubility	Colorless to light yellow (1.25 mL in 10 mL 50% Ethanol)
Solubility (Turbidity)	Clear to slightly hazy
Specific Gravity	0.930-0.936 at 25 °C
Refractive Index	n ₂₀ /D 1.482 - 1.485
Cation	Arsenic (As) : ≤ 3 ppm Cadmium (Cd) : ≤ 1 ppm Mercury (Hg) : ≤ 1 ppm Lead (Pb) : ≤ 10 ppm
Infrared Spectrum	Conforms to structure
Related Substances	Alpha- Terpineol : ≥ 55.0% Gamma-Terpineol : ≤ 23.0% trans-Beta- Terpineol : ≤ 13.0% cis- Beta- Terpineol : ≤ 10.0% Delta- Terpineol : ≤ 1.0%
Purity by GC	≥ 95.5%
Grade	KOSHER
Storage	Store at RT

For Laboratory Use Only