

Chem-Impex International, Inc.

Tel: (630) 766-2112

E-mail: sales@chemimpex.com

Shipping and Correspondence:

935 Dillon Drive

Wood Dale, IL 60191

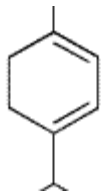
Fax: (630) 766-2218

Web site: www.chemimpex.com

Manufacturing site:

825 Dillon Drive

Wood Dale, IL 60191



Product Specifications

Catalogue Number	34962
Product	α-Terpinene <i>p</i> -Mentha-1,3-diene 1-Isopropyl-4-methyl-1,3-cyclohexadiene
CAS Number	99-86-5
Molecular Formula	C ₁₀ H ₁₆
Molecular Weight	136.24

Appearance	Colorless to pale yellow liquid
Odor	Refreshing, lemony-citrusy odor
Flash Point	47 °C
Specific Gravity	0.832 - 0.845 at 25 °C
Refractive Index	n ₂₀ /D 1.475 - 1.480
Purity by GC	85 - 100%
Grade	Natural, FG, KOSHER, FEMA 3558
Storage	Store at RT

For Laboratory Use Only